

SPECIFICATIONS

UAV Parameters

Basic Information

Type	Fixed wing
Fuselage	0.8m
Wingspan	1.23m
Main-body	EPO
Wind resistant ability	6 grade
Power system	Brush-less electric motor, 600w
Battery	8000mah Li-Po, 14.8v
Weight	2.4kg

Camera

Type	Sony a5100
Operation	Fully automatic
Sensor type	APS-CMOS
Effective pixels	24.3MP
Image resolution	6000X4000
Lens	E20mm F2.8
Sensitivity	ISO100-ISO2800
Weight	352g

SOFTWARE

Mission Planning	✓
Pre-flight check	✓
Autonomous camera trigerring	✓
Pos information download	✓
Real-time monitoring	✓
Automatic take off, flight and landing	✓

OPERATION

Take-off Speed	6m/s
Take-off angle	30 deg
Cruise Speed	72km/h
Maximum ceiling	3000m (9843ft)
Flight Duration	60min
Pre-flight setup time	5min
Wind-resistance limit	43km/h
Communication control frequency	2.4GHz
Communication control range	8km
Resolution(GSD)	3.0-20cm
Take-off type	Ejector rack
Landing type	Parachute landing
Single task area	10km ²



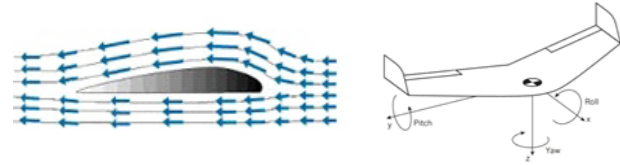
SKYCRUISER AS1200

SOUTH
Target your success



KEY FEATURES

① Exquisite streamline fuselage design tailored to aerodynamics, with 1.3m wingspan.



② The airframe adopts high strength and high-density EPO materials, not only provide better structural strength and rigidity, but also minimize the aircraft weight to the limit.



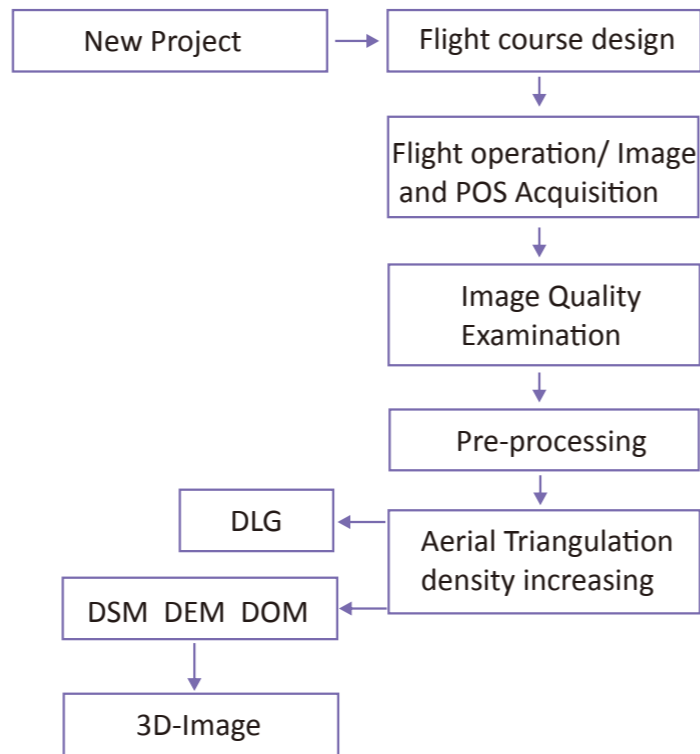
③ The collapsible catapult rack, easy for take-off; with a parachute, easily landing with less requirement for the take-off venue, so has no problem to take-off in complicated terrain condition.



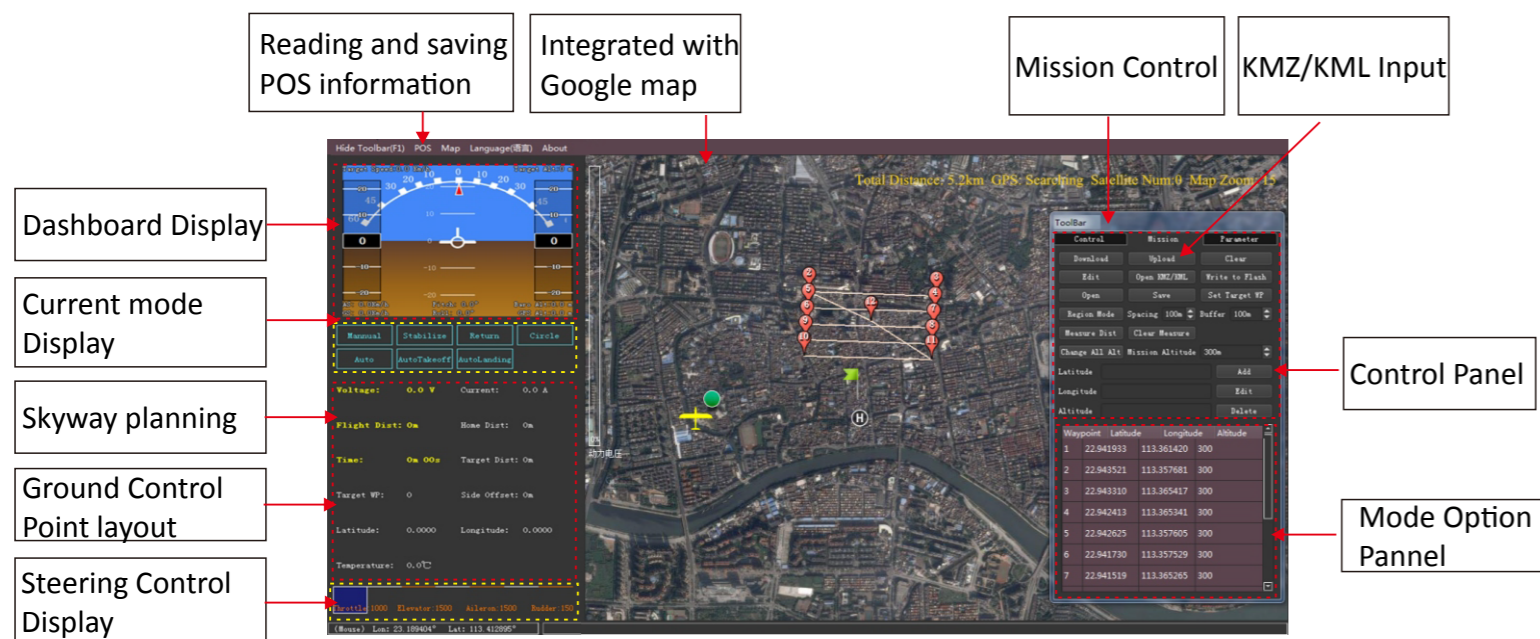
④ The large capacity lithium battery can provide 60 minutes duration time, which ensures the completion of tasks of large-scale operations.



WORKFLOW



GROUND CONTROL SYSTEM



The Powerful Flight Control software-Ground Control Station, incorporating the Google Earth platform/Google Map/Bing Map, easy to make flight path planning, and real-time display all flight statistics including the aircraft status, mission control, main battery voltage, mAh consumed Amp draw, GPS satellite strength, Steering engine status and temperature of the autopilot unit, etc.

MAIN APPLICATIONS



Power Line Inspection



Pipeline Inspection



Forest Resource Inspection

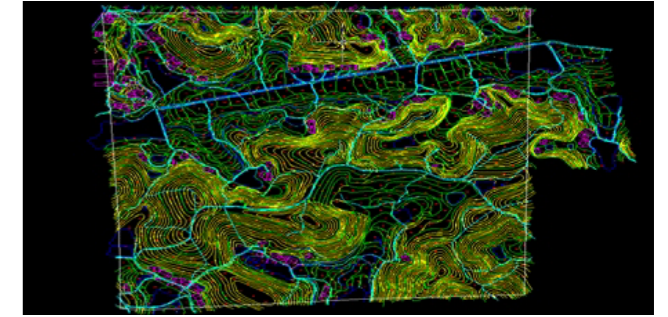


Urban Planning

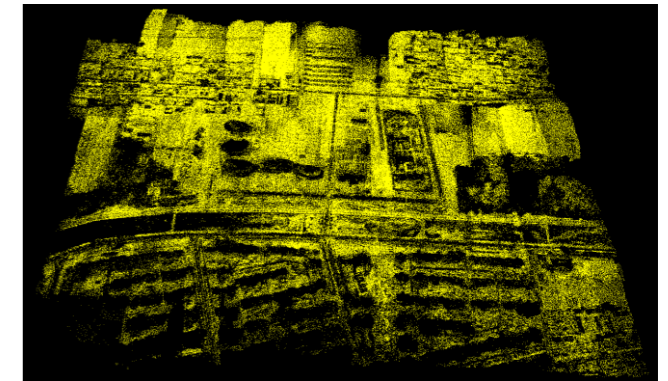


Topographic Survey

RESULTS



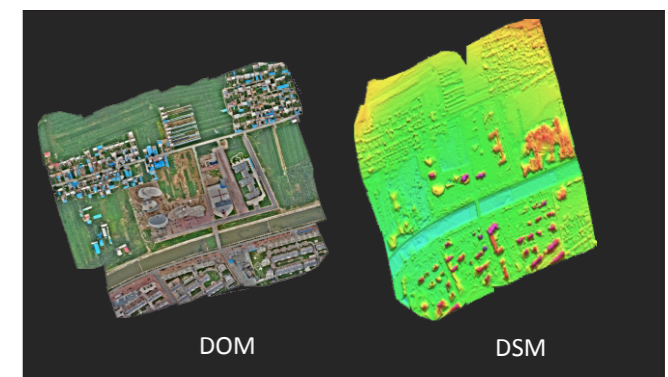
DLG Mapping



Point Cloud



3D Modeling



DOM

DSM